



County Hall  
Cardiff  
CF10 4UW  
Tel: (029) 2087 2000  
  
Neuadd y Sir  
Caerdydd  
CF10 4UW  
Ffôn: (029) 2087 2000

## PAPURAU ATODOL

<b>Pwyllgor</b>	PWYLLGOR CRAFFU AMGYLCHEDDOL
<b>Dyddiad ac amser y cyfarfod</b>	DYDD MAWRTH, 6 GORFFENNAF 2021, 4.30 PM
<b>Lleoliad</b>	MS TEAMS
<b>Aelodaeth</b>	Cynghorydd Patel (Cadeirydd) YCynghorwyr Derbyshire, Owen Jones, Lancaster, Jackie Parry, Parkhill, Owen, Sandrey a/ac Wong

Y papurau canlynol wedi'i farcio ' i ddilyn' ar yr agenda a ddsbarthwyd yn flaenorol

- 6** **Gwasanaethau Casglu Gwastraff – Atodiad A** (*Tudalennau 3 - 32*)  
Craffu ar Adolygu Polisi a Gwasanaeth

**Davina Fiore**

**Cyfarwyddwr Llywodraethu a Gwasanaethau Cyfreithiol**

Dyddiadd: Dydd Mercher, 30 Mehefin 2021

Cyswllt: Graham Porter, 02920 873401, g.porter@caerdydd.gov.uk

Mae'r dudalen hon yn wag yn fwriadol



Gweithio dros Gaerdydd, gweithio gyda'n gilydd  
Working for Cardiff, working together











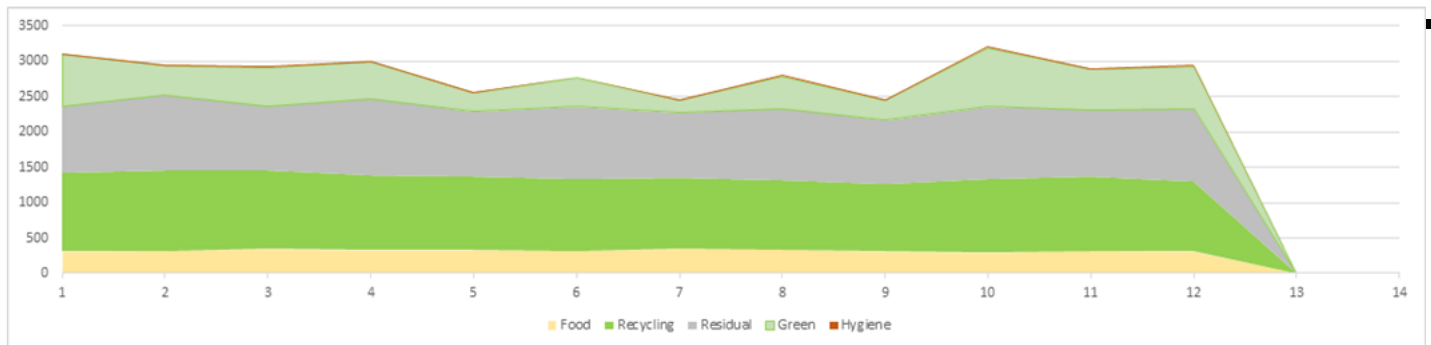
**Domestic Waste**

Hygiene recycled from this point



w/e	04/04/2021	11/04/2021	18/04/2021	25/04/2021	02/05/2021	09/05/2021	16/05/2021	23/05/2021	30/05/2021	06/06/2021	13/06/2021	20/06/2021	27/06/2021
Green	728.42	416.94	544.56	525.32	262.42	405.44	170.72	456.54	276.72	834.49	568.06	596.24	0
Food	307	324.1	344.38	330.96	327.78	318.48	348.32	333.64	315.12	291.42	321.56	312.68	0
Recycling	1116.67	1135.25	1104.2	1058.15	1043.99	1018.99	1000.02	982.13	953.81	1042.552	1041.08	988.73	0
Residual	943.36	1060.78	921.24	1078.57	915.12	1022.5	921.82	1011.7	897.89	1024.06	953.4	1031.04	0
Hygiene	16.34	14.62	16.92	10.86	12.5	10.6	15.56	20.68	22.42	20.76	20.9	19.24	0
<b>Total Waste</b>	<b>3111.79</b>	<b>2951.69</b>	<b>2931.3</b>	<b>3003.86</b>	<b>2561.81</b>	<b>2776.01</b>	<b>2456.44</b>	<b>2804.69</b>	<b>2465.96</b>	<b>3213.282</b>	<b>2905</b>	<b>2947.93</b>	<b>0</b>

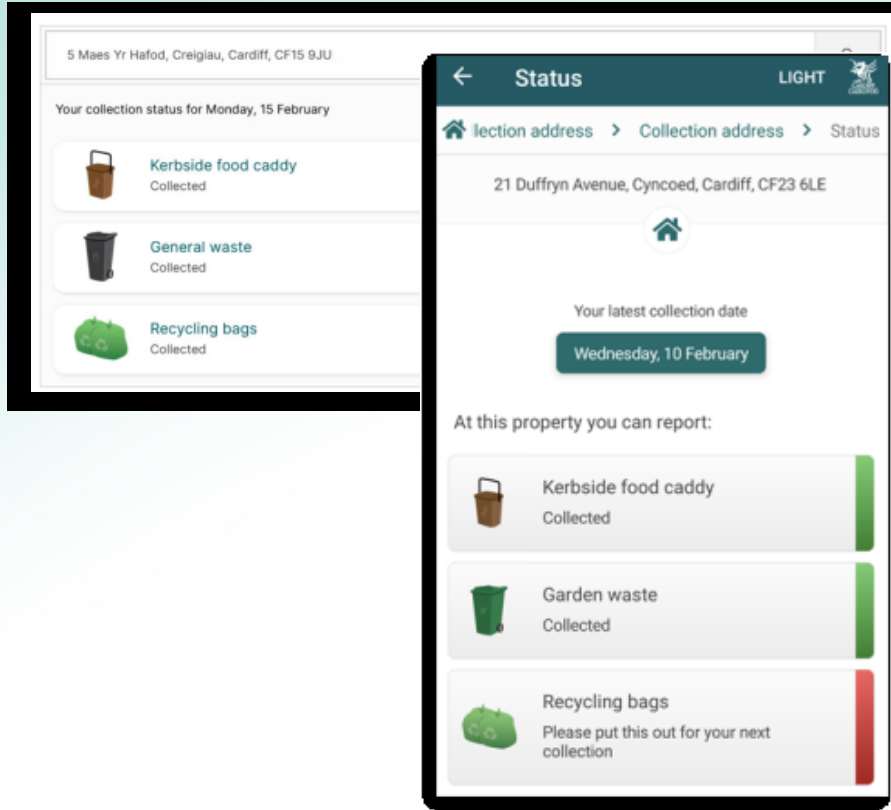
Green %	23%	14%	19%	17%	10%	15%	7%	16%	11%	26%	20%	20%	0%
Food %	10%	11%	12%	11%	13%	11%	14%	12%	13%	9%	11%	11%	0%
Recycling %	36%	38%	38%	35%	41%	37%	41%	35%	39%	32%	36%	34%	0%
Residual %	30%	36%	31%	36%	36%	37%	38%	36%	36%	32%	33%	35%	0%



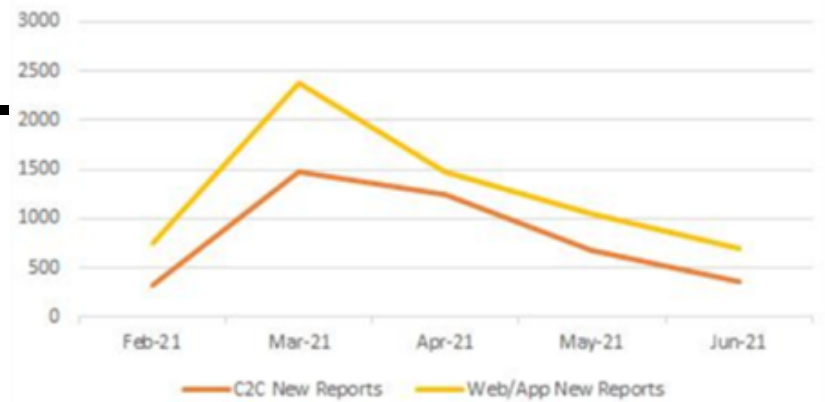








Transactions - Successful reports of Missed Waste









	Inflated by 2% to make equivalent to 20/21 rates				OVERTIME COSTS				CHANGE			
	Mar-19	Apr-19	May-19	Total	Mar-21	Apr-21	May-21	Total	March	April	May	Total
	Permanent Collections Staff	£14,886	£29,555	£31,132	£75,573	£12,406	£15,438	£9,061	£36,905	-£2,480	-£14,117	-£22,071
Agency Collections Staff	£49,118	£50,840	£74,685	£174,643	£20,977	£38,609	£17,670	£77,256	-£28,141	-£12,231	-£57,015	-£97,387
<b>Total</b>	<b>£64,004</b>	<b>£80,395</b>	<b>£105,817</b>	<b>£250,216</b>	<b>£33,383</b>	<b>£54,047</b>	<b>£26,731</b>	<b>£114,161</b>	<b>-£30,621</b>	<b>-£26,348</b>	<b>-£79,086</b>	<b>-£136,055</b>









FTE Days Lost	FTE	Target	Apr-21	May-21	YTD	Comments
<b>Waste</b>	<b>119</b>	<b>15.5</b>	39.54	38.70	40.32	This is a temporary team HR have created which is all the new posts as part of the restructure
Waste Education & Enforcement	28.81	15.5	29.18	26.64	27.91	<b>3 STS - 2 RTW with 1 still absent 2 LTS still absent</b>
Collections	35.00	15.5	30.86	24.94	25.67	<b>14 STS - 9 RTW with 5 still absent 15 LTS still absent</b>
Resource	3.93	15.5	0.00	0.00	0.00	
Trade Waste	37.34	15.5	2.51	10.50	6.95	<b>4 STS - 3 RTW with 1 still absent 1 LTS still absent</b>
Recycling Centre & WTS	28.92	15.5	31.93	37.18	34.51	<b>4 STS - 3 RTW with 1 still absent 4 LTS still absent (this includes EH)</b>
MRF	39.00	15.5	7.08	3.66	5.37	<b>3 STS RTW</b>
Depot	4.00	15.5	0.00	0.00	0.00	
Business Support	9.46	15.5	0.00	0.00	0.00	
Waste Strategy	7.57	15.5	0.00	0.00	0.00	
D&P (Stores)	8.6	15.5	0.00	0.00	0.00	
Project Gwyrdd	4.71	15.5	0.00	0.00	0.00	
Cleansing	130.96	15.5	10.73	11.72	11.45	<b>6 STS - 2 RTW with 4 still absent 4 LTS still absent</b>
Assistant Director, OM's & Support	14	15.5	0.92	10.29	5.78	<b>This is AB as he is incorrectly down as Street Scene rather than HWRC due to the restructure</b>
<b>TOTAL</b>	<b>471.30</b>	<b>15.5</b>	<b>19.99</b>	<b>20.23</b>	<b>20.31</b>	















Gweithio dros Gaerdydd, gweithio gyda'n gilydd  
Working for Cardiff, working together



Tudalen 27

REC	1
REC	2
REC	3
REC	4
REC	5
REC	6
REC	7
REC	8
REC	9
REC	10
REC	11
REC	12
REC	13
REC	14
REC	15
REC	19
CRB1	1
CRB2	2

	23-Feb	02-Mar	09-Mar	16-Mar	23-Mar	30-Mar	06-Apr	13-Apr	20-Apr	27-Apr	04-May	11-May	18-May	25-May	01-Jun	08-Jun	15-Jun	22-Jun	29-Jun
	Week 1	Week 2	Week 3	Week 4	Week 5	Week 6	Week 7	Week 8	Week 9	Week 10	Week 11	Week 12	Week 13	Week 14	Week 15	Week 16	Week 17	Week 18	Week 19
REC 1	92%	100%	100%	100%	100%	100%	100%	100%	100%	100%	100%	100%	100%	100%	100%	100%	100%	100%	100%
REC 2	70%	93%	75%	99%	81%	82%	81%	90%	94%	100%	100%	100%	100%	100%	80%	100%	100%	100%	96%
REC 3	71%	89%	70%	100%	100%	100%	100%	100%	71%	100%	100%	100%	100%	100%	100%	100%	100%	100%	100%
REC 4	58%	100%	100%	100%	100%	79%	83%	53%	95%	85%	100%	93%	100%	100%	99%	100%	100%	100%	100%
REC 5	75%	86%	99%	100%	100%	93%	100%	100%	98%	100%	100%	98%	100%	100%	100%	100%	100%	100%	100%
REC 6	75%	77%	100%	100%	100%	67%	100%	61%	96%	83%	100%	100%	65%	74%	89%	85%	86%	100%	85%
REC 7	73%	91%	100%	100%	90%	71%	85%	74%	83%	100%	100%	82%	100%	100%	100%	100%	100%	100%	100%
REC 8	83%	98%	100%	100%	100%	100%	100%	100%	100%	100%	100%	100%	100%	100%	90%	100%	100%	100%	100%
REC 9	100%	100%	100%	100%	100%	100%	100%	100%	100%	100%	100%	100%	100%	100%	100%	100%	100%	100%	100%
REC 10	56%	76%	100%	100%	100%	89%	85%	82%	100%	100%	100%	100%	100%	89%	100%	100%	100%	100%	100%
REC 11	65%	100%	100%	100%	100%	82%	74%	97%	72%	77%	100%	78%	100%	100%	91%	100%	100%	100%	100%
REC 12	91%	100%	100%	100%	100%	100%	100%	97%	100%	100%	100%	100%	100%	100%	100%	100%	100%	100%	100%
REC 13	100%	100%	100%	100%	100%	100%	100%	100%	100%	100%	100%	100%	100%	100%	100%	100%	100%	100%	100%
REC 14	n/a	n/a	100%	100%	100%	100%	100%	100%	100%	100%	100%	66%	100%	100%	100%	100%	100%	100%	100%
REC 15	n/a	n/a	n/a	100%	100%	100%	100%	100%	87%	100%	100%	100%	100%	100%	100%	90%	100%	100%	100%
REC 19	100%	100%	91%	83%	95%	84%	100%	100%	84%	100%	100%	100%	100%	100%	100%	100%	100%	100%	100%
CRB1	90%	100%	64%	100%	100%	100%	100%	100%	100%	100%	100%	100%	100%	100%	100%	100%	DISBANDED	DISBANDED	DISBANDED
CRB2	n/a	n/a	n/a	n/a	100%	100%	100%	100%	82%	N/A	DISBANDED	100%	DISBANDED	DISBANDED	DISBANDED	100%	DISBANDED	DISBANDED	100%

FOOD	1
FOOD	2
FOOD	3
FOOD	4
FOOD	5
FOOD	6
FOOD	7
FOOD	8
FOOD	9
FOOD	10

FOOD 1	100%	100%	100%	100%	100%	100%	100%	100%	100%	100%	100%	100%	100%	100%	100%	100%	100%	100%	100%
FOOD 2	100%	100%	100%	100%	100%	100%	100%	100%	100%	100%	100%	100%	95%	100%	100%	100%	100%	100%	100%
FOOD 3	93%	100%	100%	92%	100%	87%	100%	100%	100%	100%	100%	72%	100%	73%	100%	100%	77%	100%	100%
FOOD 4	83%	74%	80%	75%	100%	75%	100%	100%	84%	74%	100%	91%	100%	82%	100%	83%	73%	100%	100%
FOOD 5	100%	98%	100%	100%	100%	100%	100%	100%	100%	61%	72%	75%	89%	60%	50%	88%	62%	100%	100%
FOOD 6	100%	100%	100%	80%	100%	100%	100%	100%	83%	100%	100%	100%	100%	100%	100%	100%	84%	100%	100%
FOOD 7	77%	80%	62%	80%	95%	100%	100%	83%	100%	100%	100%	90%	100%	100%	100%	100%	90%	77%	100%
FOOD 8	100%	100%	100%	100%	100%	75%	100%	100%	100%	100%	100%	100%	100%	79%	100%	100%	100%	100%	100%
FOOD 9	100%	100%	100%	100%	100%	100%	100%	100%	100%	100%	100%	100%	100%	100%	68%	100%	100%	100%	100%
FOOD 10	NEW ROUND WC 22.06.21																		

RES	1
RES	2
RES	3
RES	4
RES	5
RES	6
RES	7
RES	8
RES	9
RES	10
RES	11
RES	19
CBR 1	1
CBR 2	2

RES 1	65%	58%	100%	100%	100%	100%	100%	100%	100%	100%	100%	100%	100%	100%	100%	100%	100%	100%	100%
RES 2	70%	73%	100%	100%	100%	100%	100%	100%	100%	100%	100%	100%	100%	100%	100%	100%	100%	100%	100%
RES 3	79%	75%	100%	100%	100%	96%	100%	100%	100%	100%	100%	100%	100%	100%	100%	100%	100%	100%	100%
RES 4	72%	82%	88%	80%	100%	90%	100%	100%	100%	100%	100%	100%	93%	100%	100%	100%	100%	100%	100%
RES 5	99%	82%	99%	75%	100%	95%	100%	82%		100%	100%	88%	100%	95%	100%	100%	100%	92%	100%
RES 6	75%	77%	85%	100%	100%	100%	100%	100%		100%	80%	100%	93%	100%	100%	100%	100%	100%	100%
RES 7	100%	n/a	91%	100%	100%	100%	100%	100%		100%	100%	100%	100%	100%	100%	100%	100%	100%	100%
RES 8	100%	n/a	100%	100%	100%	100%	100%	100%		100%	100%	100%	100%	100%	100%	100%	100%	100%	100%
RES 9	86%	n/a	100%	n/a	100%	n/a	100%	n/a	n/a	100%	n/a	100%	100%	100%	100%	100%	100%	100%	100%
RES 10	n/a	100%	100%	n/a	100%	n/a	100%	n/a	n/a	100%	n/a	100%	n/a	100%	n/a	100%	100%	100%	100%
RES 11	n/a	n/a	n/a	n/a	100%	n/a	100%	n/a	n/a	100%	n/a	100%	n/a	100%	n/a	100%	100%	100%	100%
RES 19	89%	68%	0%	84%	83%	100%	100%	100%		100%	100%	100%	100%	100%	100%	100%	100%	81%	100%
CBR 1	92%	100%	100%	100%	85%	100%	100%	72%	n/a	100%	100%	DISBANDED	100%	100%	100%	51%	100%	100%	100%
CBR 2	n/a	n/a	n/a	n/a	65%	n/a	100%	n/a	66%		DISBANDED	100%	85%	n/a	100%	n/a	n/a	n/a	n/a

COMP	1
COMP	2
COMP	3
COMP	4
COMP	5
COMP	6
COMP	7
COMP	8
COMP	9
COMP	19

	A	B	A	B	A	B	A	B	A	B	A	B	A	B	A	B	A	Complete d Wed
COMP 1	100%	n/a	100%	100%	82%	100%	62%	100%	69%									
COMP 2	100%	100%	100%	100%	86%	90%	87%	100%	86%									
COMP 3	100%	100%	87%	100%	78%	100%	78%	100%	78%									
COMP 4	100%	100%	100%	100%	100%	82%	100%	100%	100%									
COMP 5	100%	100%	85%	100%	77%	85%	71%	100%	90%									
COMP 6	100%	n/a	na	100%	86%	100%	86%	100%	100%									
COMP 7	100%	100%	83%	100%	67%	100%	67%	100%	66%									
COMP 8	100%	100%	na	100%	88%	100%	88%	100%	97%									
COMP 9					84%	n/a	n/a	100%	n/a									
COMP 19	100%	100%	100%	100%	76%	76%	100%	100%	100%									

REC	R30
FOOD	R30
COMPOST	R30
RESIDUAL	R30

REC R30	100%	100%	100%	100%	100%	100%	100%	100%	100%
FOOD R30	100%	100%	100%	95%	100%	100%	100%	100%	100%
COMPOST R30	100%	100%	100%	77%	100%	100%	100%	100%	100%
RESIDUAL R30	89%	0%	37%		63%	100%	28%	100%	100%

HYGIENE	1
	2
	3

Tudalen 28

REC	1
REC	2
REC	3
REC	4
REC	5
REC	6
REC	7
REC	8
REC	9
REC	10
REC	11
REC	12
REC	13
REC	14
REC	19
REC	20
CRB1	1
CRB2	2
CRB3	3
CRB4	4

24-Feb	03-Mar	10-Mar	17-Mar	24-Mar	31-Mar	06-Apr	13-Apr	20-Apr	28-Apr	05-May	12-May	19-May	26-May	02-Jun	09-Jun	16-Jun	23-Jun
Week 1	Week 2	Week 3	Week 4	Week 5	Week 6	Week 7	Week 8	Week 9	Week 10	Week 11	Week 12	Week 13	Week 14	Week 15	Week 16	Week 17	Week 18
95%	52%	98%	54%	100%	100%	85%	84%		91%	76%	84%	100%	100%	86%	100%	100%	86%
98%	58%	100%	57%	100%	75%	100%	100%		100%	100%	100%	100%	100%	100%	100%	100%	100%
53%	59%	77%	93%	92%	100%	100%	100%		94%	91%	100%	100%	100%	100%	100%	100%	100%
35%	81%	63%	85%	100%	100%	90%	100%		100%	100%	100%	100%	100%	75%	100%	100%	100%
100%	100%	38%	76%	100%	100%	100%	100%		100%	100%	100%	100%	100%	100%	100%	100%	94%
58%	76%	69%	100%	100%	100%	100%	100%		100%	100%	100%	100%	100%	91%	100%	100%	99%
100%	100%	100%	100%	100%	100%	100%	100%		100%	89%	100%	100%	100%	100%	100%	100%	100%
100%	96%	100%	100%	100%	100%	100%	100%		100%	100%	100%	100%	100%	100%	100%	100%	100%
100%	80%	100%	100%	93%	100%	100%	100%		100%	100%	100%	100%	100%	100%	100%	100%	100%
66%	26%	55%	100%	100%	76%	92%	100%		100%	100%	100%	100%	98%	100%	100%	100%	100%
78%	73%	76%	100%	100%	100%	94%	100%		100%	100%	70%	100%	71%	100%	100%	89%	100%
n/a	n/a	100%	43%	100%	85%	82%	100%		100%	58%	100%	68%	100%	100%	100%	100%	100%
REC	13																100%
REC	14	n/a	n/a	n/a	59%	42%	100%	100%	100%	100%	100%	100%	100%	100%	100%	100%	87%
REC	19	100%	100%	100%	100%	100%	100%	100%	100%	100%	95%	100%	100%	100%	100%	100%	100%
REC	20	100%	19%	90%	100%	100%	67%	100%	100%	100%	100%	100%	100%	100%	100%	100%	100%
CRB1	1	100%	100%	100%	100%	100%	100%	100%	100%	100%	na	100%	DISBANDED	100%	100%	100%	100%
CRB2	2	100%	100%	89%	100%	100%	100%	100%	100%	100%	na	100%		100%	100%	100%	100%
CRB3	3								0%	50%	73%	na	65%		69%	69%	DISBANDED
CRB4	4											90%					

FOOD	1
FOOD	2
FOOD	3
FOOD	4
FOOD	5
FOOD	6
FOOD	7
FOOD	8
FOOD	9
FOOD	10

93%	100%	100%	100%	100%	100%	100%	100%		100%	100%	100%	100%	100%	100%	100%	100%	100%
100%	100%	100%	100%	52%	83%	76%	100%		100%	100%	100%	100%	100%	100%	100%	100%	100%
90%	95%	84%	90%	79%	100%	66%	100%		100%	97%	100%	100%	100%	100%	62%	90%	58%
100%	100%	100%	95%	100%	100%	100%	100%		96%	59%	100%	100%	89%	100%	100%	100%	100%
100%	100%	100%	100%	100%	100%	100%	100%		70%	83%	100%	100%	89%	100%	100%	92%	100%
100%	32%	49%	70%	100%	100%	65%	100%		100%	100%	100%	100%	100%	100%	100%	100%	100%
99%	100%	100%	100%	100%	100%	100%	100%		100%	100%	100%	100%	100%	100%	100%	100%	100%
100%	100%	91%	100%	100%	100%	83%	100%		100%	100%	100%	100%	100%	71%	100%	100%	100%
100%	100%	97%	100%	100%	100%	100%	100%		100%	100%	100%	100%	100%	100%	100%	100%	98%
100%	100%	96%	87%	100%	90%	100%	100%		100%	100%	97%	100%	100%	100%	100%	100%	100%

RES	1
RES	2
RES	3
RES	4
RES	5
RES	6
RES	7
RES	8
RES	9
RES	10
RES	12
RES	19
CRB1	1
CRB2	2
CRB3	3
CRB4	4

100%	86%	91%	82%	100%	100%	100%	100%		100%	100%	100%	100%	100%	100%	100%	100%	100%
100%	84%	100%	82%	100%	100%	100%	100%		100%	100%	100%	100%	100%	100%	100%	100%	100%
100%	64%	92%	76%	100%	100%	100%	100%		100%	100%	100%	100%	100%	100%	100%	100%	100%
100%	100%	100%	77%	100%	100%	100%	100%		100%	100%	100%	100%	100%	100%	100%	100%	100%
100%	100%	90%	96%	100%	100%	100%	100%		100%	100%	100%	100%	100%	100%	100%	100%	100%
100%	100%	100%	100%	100%	100%	100%	100%		100%	100%	100%	100%	100%	100%	100%	100%	100%
100%	100%	100%	100%	100%	100%	100%	100%		100%	100%	100%	100%	100%	100%	100%	100%	100%
100%	70%	84%	75%	100%	100%	100%	100%		100%	100%	63%	100%	100%	100%	100%	100%	100%
100%	n/a	81%	100%	100%	100%	100%	100%		100%	93%	100%	100%	100%	100%	100%	100%	98%
n/a	n/a	n/a	n/a	n/a	n/a	n/a	n/a		100%	n/a	100%	100%	100%	n/a	100%	n/a	100%
n/a	100%	n/a	n/a	n/a	n/a	n/a	n/a		n/a	n/a	n/a			n/a	n/a	n/a	n/a
100%	80%	88%	81%	100%	100%	100%	100%		100%	88%	100%	88%	100%	100%	100%	100%	100%
100%	100%	61%	100%	100%	100%	100%	100%		100%	100%	100%	100%	100%	100%	100%	100%	100%
100%	n/a	100%	n/a	75%	100%	38%	100%		100%	84%	50%	46%	100%		100%	100%	100%
n/a	n/a	n/a	n/a	100%	n/a	n/a	n/a		n/a	67%	n/a	na			n/a	68%	n/a
												90%		n/a	n/a	100%	n/a

COMP	1
COMP	2
COMP	3
COMP	4
COMP	5
COMP	6
COMP	7
COMP	8
COMP	19
COMP	20
COMP	22

A	B	A	B	A	B	A	B	A	B	A	B	A	B	A	B	Complete d Thurs	Complete **
										66%	100%	77%		74%	100%	83%	100%**
										95%	100%	100%		68%	100%	79%	100%
										100%	100%	100%		100%	100%	100%	100%**
										97%	100%	na		93%	100%	86%	100%
										n/a	n/a	na		n/a	100%	100%	56%**
										n/a	84%	na		n/a	60%		
										100%	n/a	50%		90%	^	69%	
										100%	n/a	na		79%	n/a	47%	
										88%	100%	na		n/a	33%		
														47%	n/a		
												93%		n/a	n/a		

REC	R30
FOOD	R30
COMPOST	R30
RESIDUAL	R30

												100%		100%	100%	90%
												100%		100%	100%	100%
												100%		91%	100%	100%
												71%		100%	57%	100%

HYGIENE	1
	2
	3




Tudalen 30

REC	1
REC	2
REC	3
REC	4
REC	5
REC	6
REC	7
REC	8
REC	9
REC	10
REC	11
REC	12
REC	13
REC	14
REC	15
REC	16
REC	17
REC	19
REC	CBR 1
REC	CBR 2
REC	CBR 3

	23-Feb	02-Mar	09-Mar	19-Mar	26-Mar	Apr-02	06-Apr	13-Apr	20-Apr	30-Apr	07-May	14-May	21-May	28-May	04-Jun	11-Jun	18-Jun	25-Jun
	Week 1	Week 2	Week 3	Week 4	Week 5	Week 6	Week 7	Week 8	Week 9	Week 10	Week 11	Week 12	Week 13	Week 14	Week 15	Week 16	Week 17	Week 18
REC 1	58%	66%	85%	88%	100%	100%	100%	100%		100%	100%	100%	100%	100%	100%	100%	100%	100%
REC 2	59%	41%	100%	100%	100%	100%	100%	100%		100%	100%	100%	100%	100%	100%	100%	100%	100%
REC 3	63%	100%	100%	72%	100%	100%	84%	100%		100%	100%	100%	100%	100%	100%	100%	100%	100%
REC 4	64%	68%	100%	100%	100%	100%	100%	100%		100%	100%	100%	100%	100%	100%	100%	100%	100%
REC 5	66%	77%	87%	100%	93%	100%	100%	100%		94%	100%	100%	100%	100%	100%	100%	100%	100%
REC 6	65%	79%	79%	100%	87%	100%	100%	100%		100%	100%	100%	100%	100%	93%	100%	100%	100%
REC 7	59%	53%	82%	81%	61%	100%	100%	100%		100%	100%	94%	100%	100%	100%	100%	100%	100%
REC 8	80%	65%	81%	81%	100%	100%	100%	96%		100%	100%	100%	100%	100%	100%	100%	100%	100%
REC 9	63%	70%	76%	96%	100%	100%	100%	100%		100%	100%	100%	100%	100%	100%	100%	100%	100%
REC 10	42%	79%	82%	100%	90%	100%	100%	100%		99%	100%	100%	100%	100%	100%	100%	100%	100%
REC 11	61%	66%	100%	87%	100%	100%	100%	100%		100%	95%	100%	100%	100%	100%	100%	100%	100%
REC 12	65%	71%	100%	87%	100%	100%	61%	100%		99%	100%	100%	100%	100%	100%	100%	100%	100%
REC 13	66%	n/a	79%	75%	100%	100%	100%	100%		100%	100%	100%	100%	100%	100%	100%	100%	100%
REC 14	72%	n/a	85%	100%	100%	100%	100%	100%		100%	100%	100%	100%	100%	100%	100%	100%	100%
REC 15	n/a	n/a	100%	100%	100%	100%	100%	100%		100%	100%	100%	100%	100%	100%	100%	100%	100%
REC 16	n/a	n/a	n/a	n/a	100%	100%	71%	94%		100%	100%	100%	100%	100%	100%	100%	100%	100%
REC 17	n/a	n/a	n/a	n/a	100%	100%	100%	100%		100%	100%	100%	100%	100%	100%	100%	100%	100%
REC 19	83%	84%	100%	84%	100%	100%	100%	100%		82%	100%	100%	100%	100%	100%	100%	100%	100%
REC CBR 1	100%	100%	100%	100%	100%	100%	83%	100%		100%	100%	100%	100%	100%	100%	100%	45%	32%
REC CBR 2	n/a	100%	n/a	n/a	n/a	n/a	100%	100%		100%	100%	100%	100%	100%	100%	100%	100%	100%
REC CBR 3	n/a	100%	n/a	n/a	n/a	n/a	n/a	n/a				n/a	n/a	n/a				

FOOD	1
FOOD	2
FOOD	3
FOOD	4
FOOD	5
FOOD	6
FOOD	7
FOOD	8
FOOD	9
FOOD	10

FOOD 1	100%	100%	100%	100%	100%	100%	100%	100%		100%	100%	100%	100%	100%	83%	100%	100%	100%
FOOD 2	73%	100%	100%	100%	100%	100%	100%	100%		100%	100%	100%	100%	100%	100%	100%	100%	100%
FOOD 3	67%	100%	100%	100%	100%	84%	100%	100%		100%	80%	87%	100%	74%	100%	95%	100%	100%
FOOD 4	68%	100%	100%	85%	100%	85%	55%	100%		100%	92%	71%	74%	100%	100%	100%	100%	79%
FOOD 5	100%	100%	100%	68%	100%	100%	100%	100%		100%	86%	100%	100%	86%	79%	100%	31%	100%
FOOD 6	71%	100%	100%	73%	100%	89%	69%	100%		100%	67%	100%	86%	100%	84%	100%	86%	100%
FOOD 7	66%	70%	100%	100%	100%	100%	100%	100%		89%	100%	100%	100%	100%	100%	100%	96%	81%
FOOD 8	69%	100%	100%	100%	100%	100%	100%	100%		84%	100%	89%	100%	100%	90%	100%	100%	100%
FOOD 9	80%	60%	100%	100%	100%	100%	100%	100%		100%	100%	100%	100%	100%	100%	100%	100%	100%
FOOD 10	56%	n/a	92%	72%	66%	72%	100%	100%		100%	70%	100%	74%	100%	100%	94%	100%	100%

RES	1
RES	2
RES	3
RES	4
RES	5
RES	6
RES	7
RES	8
RES	9
RES	10
RES	11
RES	12
RES	13
RES	19
CBR 1	1
CBR 2	2

RES 1	52%	56%	87%	97%	100%	100%	100%	100%		100%	100%	100%	100%	100%	100%	100%	100%	100%
RES 2	58%	44%	100%	65%	100%	100%	100%	100%		100%	100%	100%	100%	100%	100%	100%	100%	100%
RES 3	32%	53%	65%	73%	100%	100%	100%	100%		100%	100%	100%	100%	100%	100%	100%	100%	100%
RES 4	48%	44%	69%	69%	82%	100%	100%	100%		100%	100%	100%	100%	100%	100%	100%	100%	100%
RES 5	100%	62%	73%	65%	100%	100%	100%	100%		100%	100%	100%	100%	100%	100%	100%	100%	100%
RES 6	63%	60%	79%	68%	100%	100%	100%	100%		100%	100%	100%	100%	100%	100%	100%	100%	100%
RES 7	65%	62%	64%	71%	100%	100%	100%	100%		100%	100%	100%	100%	100%	100%	100%	100%	100%
RES 8	n/a	n/a	n/a	80%	87%	100%	100%	100%		100%	100%	100%	100%	100%	100%	100%	100%	100%
RES 9	n/a	n/a	n/a	74%	n/a	100%	100%	100%		100%	100%	100%	100%	100%	100%	100%	100%	88%
RES 10	n/a	n/a	n/a	73%	n/a	100%	n/a	83%		100%	n/a	100%	n/a	100%	n/a	93%	n/a	100%
RES 11	n/a	n/a	n/a	n/a	n/a	100%	n/a	100%		100%	n/a	100%	n/a	100%	n/a	100%	n/a	100%
RES 12	n/a	n/a	n/a	n/a	n/a	100%	n/a	100%		100%	n/a	100%	n/a	73%	n/a	100%	n/a	100%
RES 13	n/a	n/a	n/a	n/a	n/a	100%	n/a	97%		100%	n/a	100%	n/a	89%	n/a	81%	n/a	68%
RES 19	100%	100%	85%	84%	100%	100%	100%	84%		82%	100%	100%	100%	88%	100%	100%	100%	100%
CBR 1 1	68%	100%	100%	100%	n/a	100%	100%	45%		100%	100%	100%	100%	100%	100%	100%	100%	100%
CBR 2 2	n/a	n/a	n/a	n/a	100%	100%	100%	100%		100%	100%	100%	74%	100%	100%	100%	100%	100%

	A	B	A	B	A	B	A	B	A	B	A	B	A	B	THU	THURS COMPOST WORK	SAT19TH JUNE	SAT26TH JUNE	
COMP 1																100%	46%	41%	79%
COMP 2																100%	100%	59%	73%
COMP 3																100%	100%	65%	100%
COMP 4																26%	na	78%	100%
COMP 5																100%	100%	97%	
COMP 6																100%	na	91%	
COMP 7																100%	100%		
COMP 8																46%	na	n/a	
COMP 9																100%	na	n/a	
COMP 10																100%	na	n/a	
COMP 11																100%	na	n/a	
COMP 19																100%	100%		

REC	R30
FOOD	R30
COMPOST	R30
RESIDUAL	R30

	100%	100%	100%	100%	100%	100%	100%
	100%	100%		100%	100%	100%	100%
	100%	21%		13%	0%	31%	0%
	100%	100%	100%	100%	87%	100%	

HYGIENE	1
	2
	3

	97%
	100%
	58%

Missed Collection Reports by Month & Ward (Between 23.02.21 & 23.06.21)

Total Properties	Ward	FEBRUARY			MARCH			APRIL			MAY			JUNE			TOTAL		
		Reports	Total Collections	% reported Missed	Reports	Total Collections	% reported Missed	Reports	Total Collections	% reported Missed	Reports	Total Collections	% reported Missed	Reports	Total Collections	% reported Missed	Total Collections	Total Reports by Ward	Total % Reported Missed
3,918	Adamsdown	37	11,754	0.31	56	39,180	0.14	26	39,180	0.07	31	39,180	0.08	41	31,344	0.13	160,638	191	0.12
2,013	Butetown	19	6,039	0.31	25	20,130	0.12	29	20,130	0.14	18	20,130	0.09	10	16,104	0.06	82,533	101	0.12
4,382	Caerau	24	13,146	0.18	96	43,820	0.22	61	43,820	0.14	54	43,820	0.12	58	35,056	0.17	179,662	293	0.16
6,800	Canton	28	20,400	0.14	128	68,000	0.19	133	68,000	0.20	60	68,000	0.09	51	54,400	0.09	278,800	400	0.14
5,968	Cathays	64	11,936	0.54	86	77,584	0.11	58	59,680	0.10	65	59,680	0.11	44	59,680	0.07	268,560	317	0.12
2,473	Creigiau / St Fagans	70	7,419	0.94	72	32,149	0.22	93	24,730	0.38	73	24,730	0.30	32	24,730	0.13	113,758	340	0.30
4,179	Cyncoed	9	8,358	0.11	109	41,790	0.26	86	54,327	0.16	41	41,790	0.10	60	29,253	0.21	175,518	305	0.17
5,931	Ely	84	17,793	0.47	91	59,310	0.15	130	59,310	0.22	62	59,310	0.10	75	47,448	0.16	243,171	442	0.18
5,485	Fariwater	55	16,455	0.33	172	54,850	0.31	116	54,850	0.21	82	54,850	0.15	112	43,880	0.26	224,885	537	0.24
2,445	Gabalfa	20	4,890	0.41	79	31,785	0.25	19	24,450	0.08	26	24,450	0.11	21	24,450	0.09	110,025	165	0.15
6,783	Grange town	29	20,349	0.14	97	67,830	0.14	81	67,830	0.12	51	67,830	0.08	35	54,264	0.06	278,103	293	0.11
5,106	Heath	28	10,212	0.27	191	66,378	0.29	51	51,060	0.10	28	51,060	0.05	25	51,060	0.05	229,770	323	0.14
1,499	Lisvane	7	2,998	0.23	38	14,990	0.25	45	19,487	0.23	22	14,990	0.15	44	10,493	0.42	62,958	156	0.25
3,775	Llandaff	19	7,550	0.25	188	49,075	0.38	48	37,750	0.13	48	37,750	0.13	15	37,750	0.04	169,875	318	0.19
3,234	Llandaff North	46	6,468	0.71	135	42,042	0.32	41	32,340	0.13	45	32,340	0.14	37	32,340	0.11	145,530	304	0.21
7,043	Llansihen	20	14,086	0.14	141	70,430	0.20	103	91,559	0.11	85	70,430	0.12	84	49,301	0.17	295,806	433	0.15
4,623	Llanrumney	18	9,246	0.19	90	46,230	0.19	76	60,099	0.13	54	46,230	0.12	51	32,361	0.16	194,166	289	0.15
5,478	Pentwyn	64	16,434	0.39	168	54,780	0.31	82	54,780	0.15	74	54,780	0.14	58	43,824	0.13	224,598	446	0.20
1,520	Pentyrch	4	3,040	0.13	63	19,760	0.32	62	15,200	0.41	48	15,200	0.32	25	15,200	0.16	68,400	202	0.30
5,228	Penylan	38	15,684	0.24	172	52,280	0.33	48	52,280	0.09	63	52,280	0.12	34	41,824	0.08	214,348	355	0.17
7,951	Plasnewydd	9	23,853	0.04	55	79,510	0.07	68	79,510	0.09	59	79,510	0.07	50	63,608	0.08	325,991	241	0.07
4,781	Pontprenau / Old St Mellons	69	14,343	0.48	232	47,810	0.49	153	47,810	0.32	113	47,810	0.24	64	38,248	0.17	196,021	631	0.32
2,789	Radyr	18	5,578	0.32	108	36,257	0.30	40	27,890	0.14	21	27,890	0.08	21	27,890	0.08	125,505	208	0.17
5,128	Rhiwbina	6	10,256	0.06	68	51,280	0.13	66	66,664	0.10	31	51,280	0.06	32	35,896	0.09	215,376	203	0.09
6,178	Riverside	21	18,534	0.11	100	61,780	0.16	76	61,780	0.12	41	61,780	0.07	30	49,424	0.06	253,298	268	0.11
3,609	Rumney	113	7,218	1.57	133	36,090	0.37	67	46,917	0.14	31	36,090	0.09	34	25,263	0.13	151,578	378	0.25
5,775	Splott	47	17,325	0.27	55	57,750	0.10	62	57,750	0.11	45	57,750	0.08	32	46,200	0.07	236,775	241	0.10
6,500	Trowbridge	32	13,000	0.25	145	65,000	0.22	103	84,500	0.12	94	65,000	0.14	44	45,500	0.10	273,000	418	0.15
6,770	Whitchurch & Tongwynlais	13	13,540	0.10	367	88,010	0.42	96	67,700	0.14	84	67,700	0.12	72	67,700	0.11	304,650	632	0.21
137,364	Total by Month	1011	347,904	0.29	3460	1,475,880	0.23	2119	1,471,383	0.14	1549	1,373,640	0.11	1291	1,134,491	0.11	5,803,298	9430	0.16

Mae'r dudalen hon yn wag yn fwriadol